



San Diego Basin Water Supply Adaptation to Climate Change

SD IRWM- Proposition 50, Project 12

Regional Advisory Committee Meeting
December 7, 2016

Goldy Herbon
Senior Water Resources Specialist

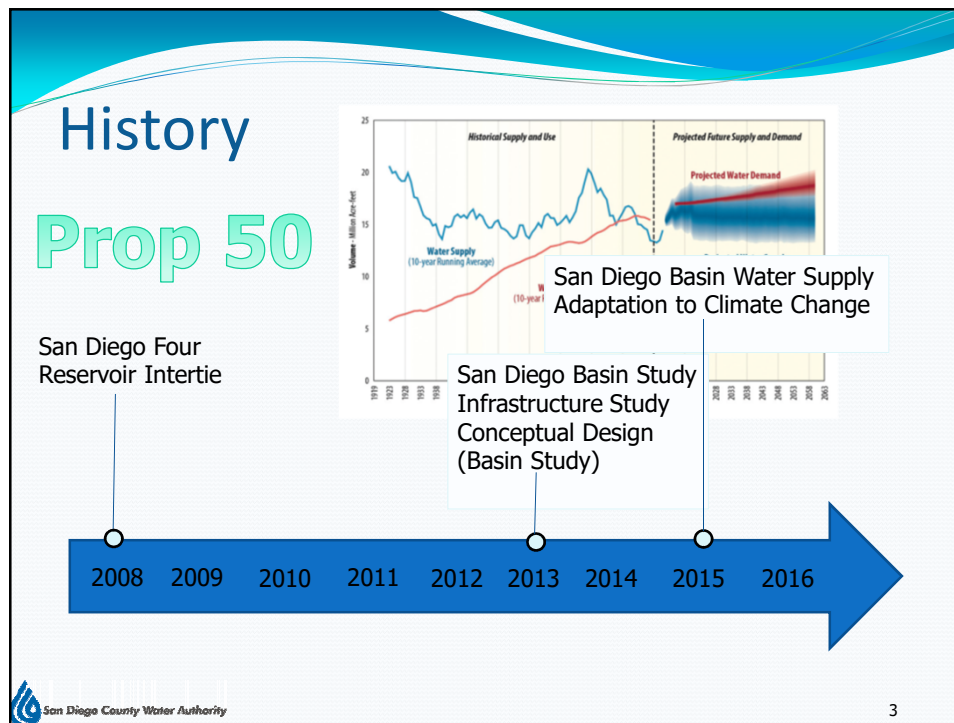
Agenda

- History →
- Project Purpose
- Goals and Objectives
- Challenges
- Amendments
- Work Completed



San Diego County Water Authority

2



Project Purpose

- Assess the region's water supply and demand and determine the potential effects from climate change impacts within the San Diego Integrated Regional Water Management (IRWM) planning region.

San Diego County Water Authority

4

Goals and Objectives

- Goals
 - Help bridge current and future water supply gaps
 - Complement existing planning efforts
 - Develop partnerships
- Objectives
 - Evaluate water supply and demand conditions in the San Diego IRWM Region under future climate change conditions

Project Challenges

- Multiple funding sources (State and Federal)
 - Multi-Agency Contracting
 - Grant Program budgets and schedules



Amendments

	Original	Amendment #1	Amendment #2	Amendment #3	Amendment #4	Amendment #5
Project Title	Four Reservoir Intertie Study	Four Reservoir Intertie Study	San Diego Basin Study Infrastructure Study Conceptual Design		San Diego Basin Water Supply Adaptation to Climate Change	San Diego Basin Water Supply Adaptation to Climate Change
LPS	Sweetwater Authority	City of San Diego				
Total Budget	\$2,022,784 to \$3,022,784	\$4,678,920	\$2,059,460			
End Date	November 2011	December 2013		December 2015	April 1, 2016	April 29, 2016
Quantifiable Benefits	100,000 AF of storage		Stakeholder criteria evaluation, supply and reliability comparison, analysis of supply uncertainties, adaptation strategies, economic analysis, recommendations		Stakeholder criteria evaluation, supply and reliability comparison, analysis of supply uncertainties	

Total Budget

Page 179 of 221

Work Item # 12: San Diego Basin Infrastructure Study Conceptual Design
Local Project Sponsor: City of San Diego
San Diego IRWM Grant Agreement

Budget Category	Other State Funds	Non-State Share (Funding)	Grant Funding	Total	Required Local Cost	Retention Withheld	Received to Date	Remaining
PA Proposal Administration	\$ -	\$ -	\$ -	\$ -		\$ -	\$ -	\$ -
PA (a) Direct Project Administration	\$ -	\$ 93,000	\$ 16,428	\$ 109,428		\$ 3,643	\$ -	\$ 16,428
(b) Land Purchase/Easement	\$ -	\$ -	\$ -	\$ -		\$ -	\$ -	\$ -
(c) Planning/Design/Eng/Env Doc	\$ -	\$ 275,000	\$ 743,032	\$ 1,018,032	115,024	\$ 74,303	\$ -	\$ 743,032
(d) Construction/Implementation	\$ -	\$ -	\$ -	\$ -		\$ -	\$ -	\$ -
(e) Env Comp/Mitigation/Enhance	\$ -	\$ -	\$ -	\$ -		\$ -	\$ -	\$ -
(f) Construction Administration	\$ -	\$ -	\$ -	\$ -		\$ -	\$ -	\$ -
(g) Other Costs	\$ -	\$ -	\$ -	\$ -		\$ -	\$ -	\$ -
(h) Const/Imp Contingency	\$ -	\$ -	\$ -	\$ -		\$ -	\$ -	\$ -
(i) Project Subtotal (Sum rows a through h)	\$ -	\$ 368,000	\$ 759,460	\$ 1,127,460	\$ 115,024	\$ 75,946	\$ 683,514	\$ 75,946
(j) Grand Total (sum rows PA through h)	\$ -	\$ 368,000	\$ 759,460	\$ 1,127,460	\$ 115,024	\$ 75,946	\$ 683,514	\$ 75,946
(k) Calc of Funding Match %		\$368,000	\$1,127,460					

Sources of Funds for Non-State Share (Funding Match) and In-Kind services, Federal and local funds

1) "Other State Funds" may be presented in Table 8 to demonstrate the full funding picture for the Proposal and, if presented, must be included in the total costs of the Proposal, which will be used to determine the percentage for the Funding Match Scoring Criterion.

2) Range of costs will be clarified upon completion of Budget Category (c), Task 12C.2 (Project Elements). The total cost will be within the range shown as Grand Total on Table 8 and Table 12-1.

Work Completed

The screenshot shows the Reclamation website with the following content:

- RECLAMATION** Managing Water in the West
- Navigation: Water & Power, Resources & Research, About Us, Recreation & Public Use, News & Multimedia
- Section: Lower Colorado Region
- Breadcrumb: Reclamation Home / Lower Colorado Region / Southern California Area Office / Basin Studies / San Diego Watershed Basin Study
- San Diego Watershed Basin Study**
- Quick Links**
 - Fact Sheet
- Task 2 Reports**
 - Task 2.1 - Water Supply and Demand Projections Interim Report (March 2016)
 - Task 2.2 - Climate Change Impacts and Hydrologic Modeling Final Report (May 2016)
 - Task 2.3 - Existing Structural Response and Operations Guidelines Analysis
 - Task 2.4 - Structural and Operational Concepts
 - Task 2.5 - Trade-off Analysis and Recommendations
 - Task 2.6 - Final Report
- Outreach Info**
 - Nov. 7, 2014 Meeting Agenda
 - Nov. 7, 2014 Presentation
 - Feb. 2, 2016 Meeting Agenda
 - Feb. 2, 2016 Presentation
- Other Southern California Basin Studies**
- San Diego County Water Authority**

9

Next Steps

The graphic contains the following information:

- RECLAMATION** Managing Water in the West
- San Diego Basin Study Stakeholder Meeting**
- Task 2.4 Structural and Non-Structural Concepts**
- January 31, 2017**
- 1:00-3:30**
- SDCWA Board Room**
- U.S. Department of the Interior Bureau of Reclamation**
- San Diego County Water Authority**

10

Questions

Allison Danner,
adanner@usbr.gov, 702-293-8331

Goldy Herbon
gherbon@sdewa.org, 858-522-6767

<http://www.usbr.gov/lc/socal/basinstudies/SDBasin.html>