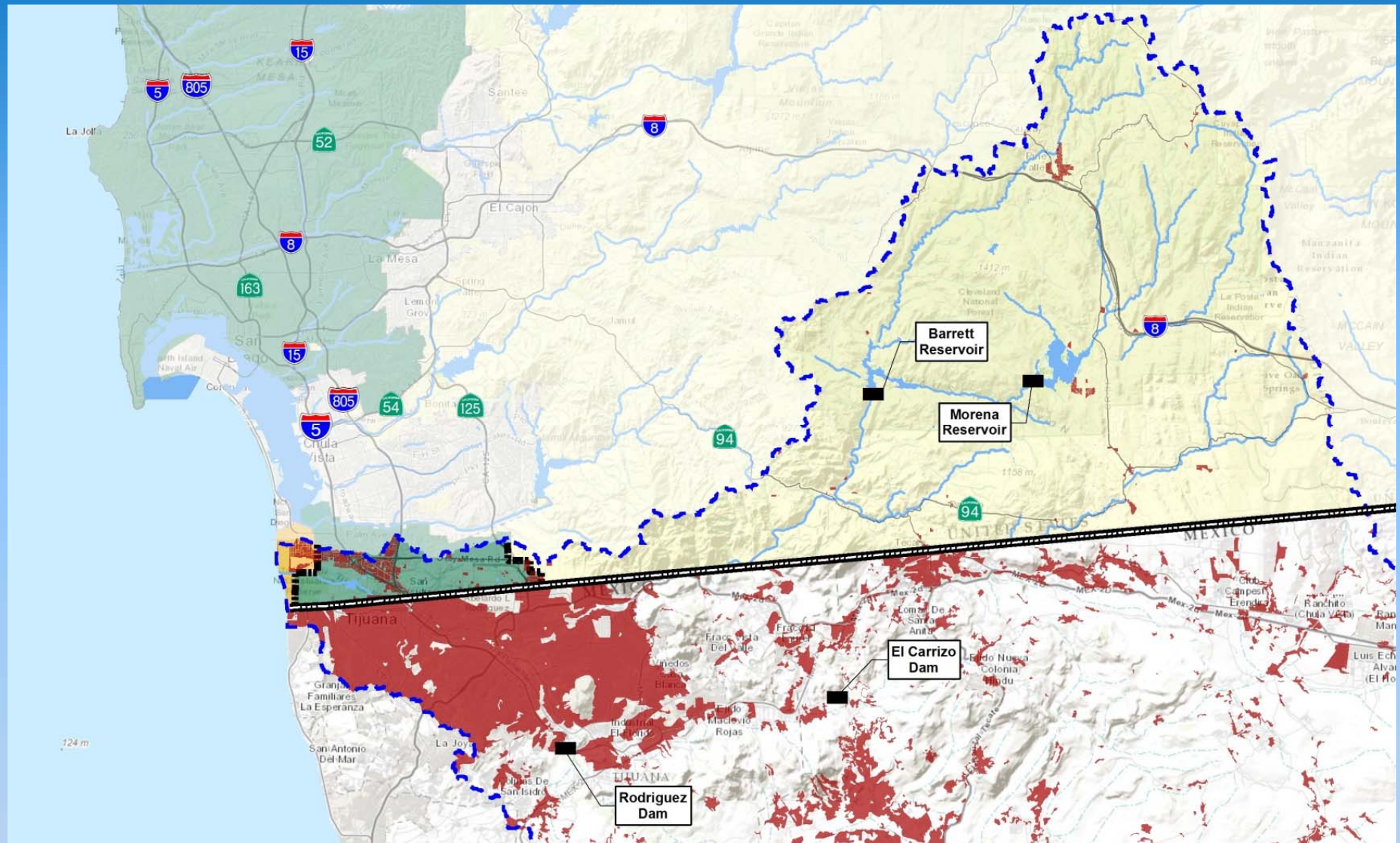


# El Nino Tijuana River Watershed



Chris Helmer – City of Imperial Beach  
February 3, 2016





- 1.1 million acres (largest watershed in the County)
- Red represents urban areas



## Water Quality



## Trash



## Sediment



## Flooding





# Water Quality



# Trash

**Tijuana River Action Month Totals**  
(Trash in tons)





# Trash

**Impacts to recreation**



**Vector diseases**



# Sediment

## Goat Canyon Sediment Basin

- Destruction of 30 acres of salt marsh
- Constructed in 2005
- Size 60,000 cy



Periodic storm events can cause up to several feet of sediment to deposit in the Valley



# Sediment



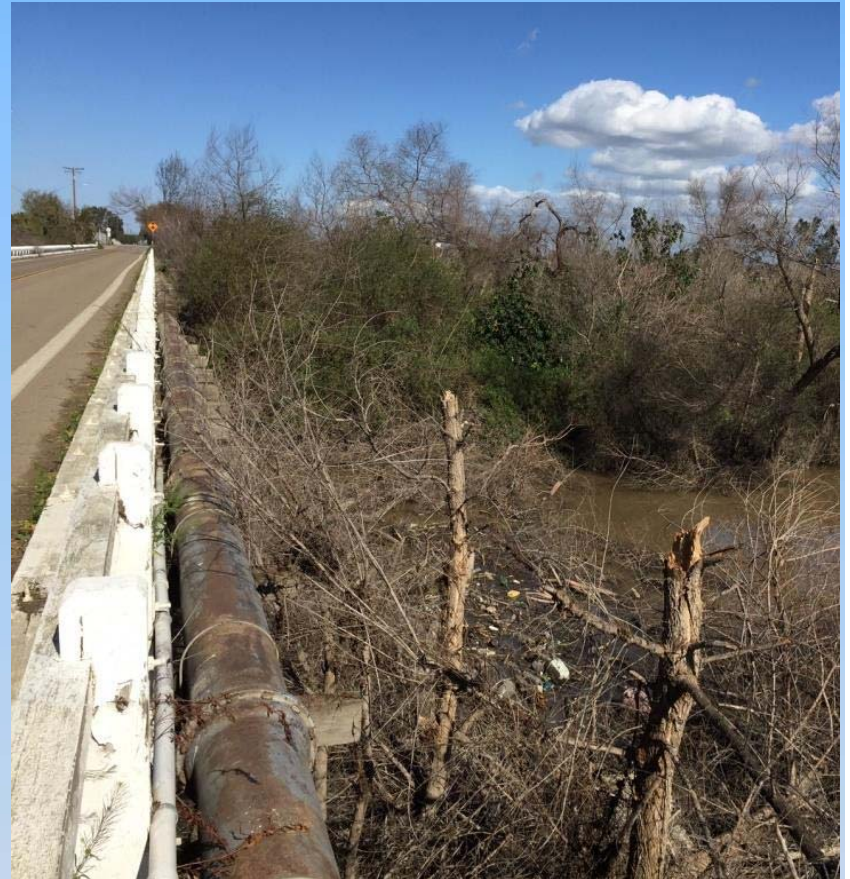


# Flooding

## Shot Hole Borer Beetle

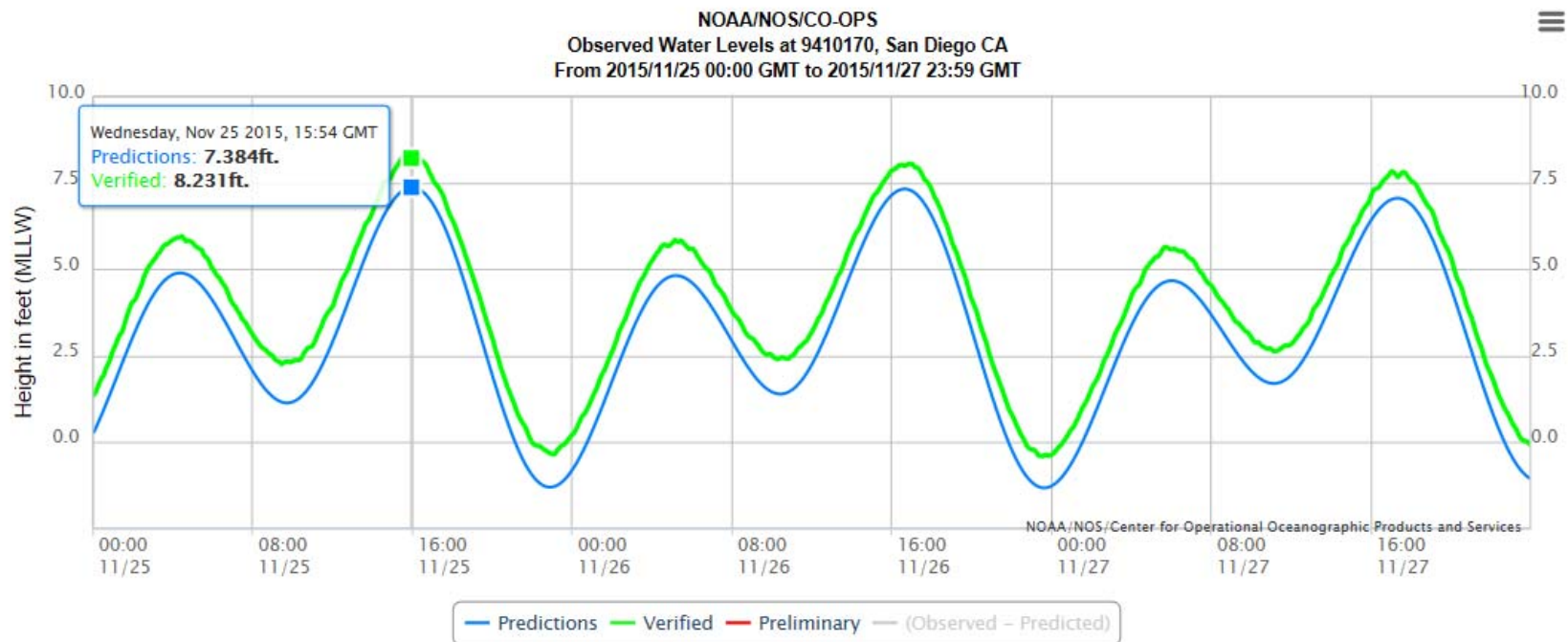


- 80% of trees in the river valley





# Flooding



Higher tides



# Flooding





## Resource Links

### Shot Hole Bore Beetle

- <http://eskalenlab.ucr.edu/>
- <http://ucanr.edu/sites/pshb/>

### Tijuana River Action Month

- <http://www.tjriveraction.net/about/>

### Tijuana River Recovery Team

- [http://www.swrcb.ca.gov/sandiego/water\\_issues/tijuana\\_river\\_valley\\_strategy/index.shtml](http://www.swrcb.ca.gov/sandiego/water_issues/tijuana_river_valley_strategy/index.shtml)
- Next meeting 1:00 on February 25<sup>th</sup> at the Tijuana Estuary Visitor Center

