



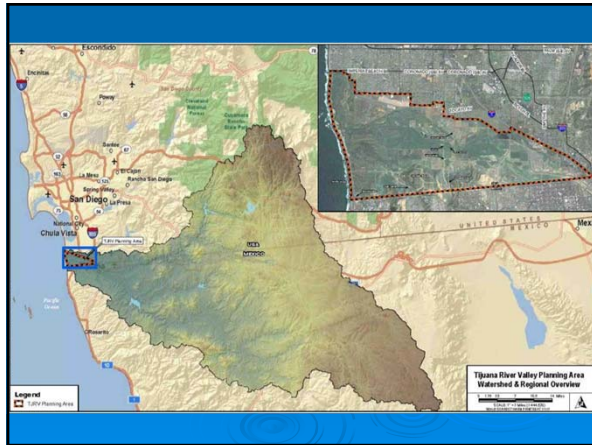
Recent Domestic Efforts to Manage Tijuana River Valley Natural Resources

Tijuana River Watershed Panel

Regional Advisory Committee
February 5, 2014

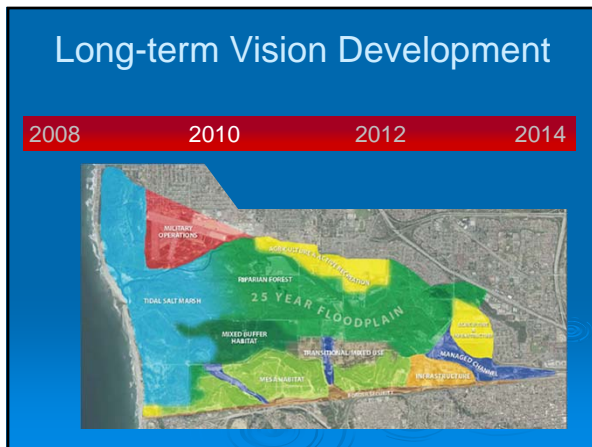
Agenda

- Recovery Strategy
- Water Quality Improvement Plan
- Project Concepts and Integration



Recovery Team Formation

2008	2010	2012	2014
			
Non-governmental organizations		Public	Private Landowners



Document Priority Action Areas

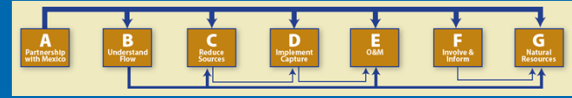
2008	2010	2012	2014
			

Document Priority Action Areas

2008 2010 2012 2014

- Partnership with Mexico
- Understand flow: water, sediment and trash
- Reduce pollutant sources
- Implement capture devices
- Fund and perform O&M
- Involve and inform communities
- Value natural resources

Action Area Integration



'New' MS4 Stormwater Approach

What is an MS4?

- Municipal
- Separate
- Storm
- Sewer
- System



'New' MS4 Stormwater Approach

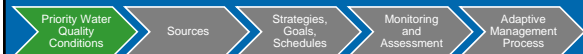
Water Quality Improvement Plan(s)

- Regional MS4 permit approved 2013
- Significant changes to previous permit(s)

Approach:
Watershed-based

Performance:
Water quality outcomes

Foundation:
Water Quality Improvement Plan



- MS4 discharges
- Receiving waters

Water Quality Improvement Plan(s)

Priority Water Quality Conditions → Sources → Strategies, Goals, Schedules → Monitoring and Assessment → Adaptive Management Process

Over-irrigation Roadways
Trash Pet waste

Water Quality Improvement Plan(s)

Priority Water Quality Conditions → Sources → Strategies, Goals, Schedules → Monitoring and Assessment → Adaptive Management Process

Agriculture Industrial facilities
International sources

Water Quality Improvement Plan(s)

Priority Water Quality Conditions → Sources → Strategies, Goals, Schedules → Monitoring and Assessment → Adaptive Management Process

Agriculture Industrial facilities
International sources

Water Quality Improvement Plan(s)

Priority Water Quality Conditions → Sources → Strategies, Goals, Schedules → Monitoring and Assessment → Adaptive Management Process

Roadways Street cleaning truck
Group of people Dog

Water Quality Improvement Plan(s)

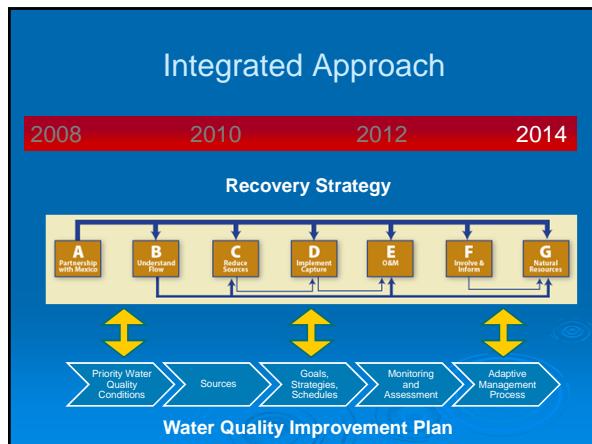
Priority Water Quality Conditions → Sources → Strategies, Goals, Schedules → Monitoring and Assessment → Adaptive Management Process

Person cleaning storm drain Storm drain opening

Water Quality Improvement Plan(s)

Priority Water Quality Conditions → Sources → Strategies, Goals, Schedules → Monitoring and Assessment → Adaptive Management Process

Prioritize
Assess
Implement
KEY WQ IMPROVEMENT STRATEGIES



Project Concept

- **Sediment Management Plan**
 - Evaluate disposal options
 - Develop cost-effective long-term solutions

Three images illustrating sediment management: a map of a coastal area, a photograph of a beach with rocks, and a photograph of a landscape with hills and a river.

Project Concept

- **Flow Impediment Removal Evaluation**
 - Enhance natural hydrologic processes
 - Reduce flooding
 - Protect critical infrastructure
 - Enhance habitat

A map of a coastal area with a red line indicating a flow path. To the right is a hydrograph showing flow rate (cfs) on the y-axis (0 to 80,000) and time on the x-axis (0 to 168 hours). The graph shows several peaks of varying heights and durations, representing different flow scenarios.

Project Concept

- **Recovery Strategy Implementation**
 - Facilitate consensus-based approach
 - Coordinate adaptive processes

Two photographs: the left one shows a group of people sitting around a table in a meeting room, labeled 'United States'; the right one shows a group of people standing outdoors in front of a building, labeled 'Mexico'.

True Integration

- Recovery Strategy
- Water Quality Improvement Plan
- Other partner efforts
 - EPA Border 2020 Program
 - Good Neighbor Environmental Council
 - NGOs: WildCoast, Surfrider, 4 Walls Int'l
- Bi-national coordination

Bryn Evans, CPSWQ
Senior Project Manager
Dudek
bevans@dudek.com
(760) 479-4143