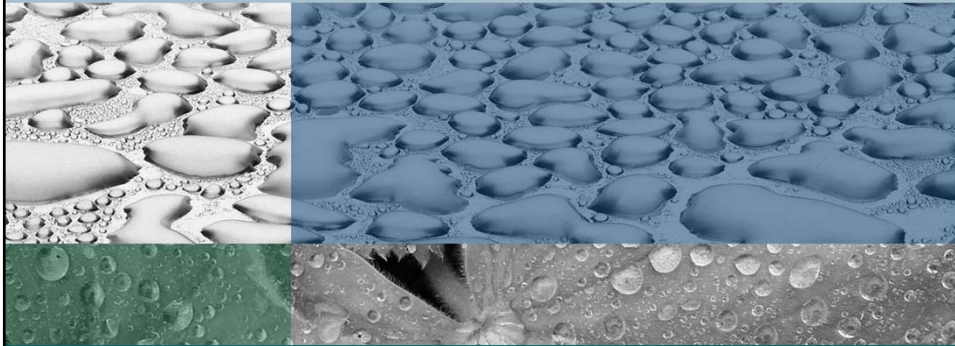


## *Watershed Workshop San Juan – Santa Margarita – San Luis Rey*



September 25, 2012

### *Agenda*

- Welcome & Introductions
- IRWM Overview
- San Juan Watershed
- Santa Margarita Watershed
- San Luis Rey Watershed
- Next Steps

## *Agenda*

- Welcome & Introductions
- IRWM Overview
- San Juan Watershed
- Santa Margarita Watershed
- San Luis Rey Watershed
- Next Steps

## *Agenda*

- Welcome & Introductions
- IRWM Overview
- San Juan Watershed
- Santa Margarita Watershed
- San Luis Rey Watershed
- Next Steps

## *What is Integrated Regional Water Management (IRWM) Planning?*

- A new way to increase reliable water supplies, improve water quality and protect natural resources through cooperation among public agencies with different jurisdictions and non-profit public interest organizations
- A mechanism through which San Diego Region is eligible for substantial grant funding from Proposition 84 and Proposition 1E

## *Benefits of IRWM Planning*



## San Diego IRWM Region

- All or part of the eleven (11) hydrologic units within San Diego County that discharge to coastal waters



7

## 2007 San Diego IRWM Plan

- Foundation for integrated planning in the San Diego region
- Adopted in December 2007
- Extensive update is currently underway

2007 San Diego Integrated Regional Water Management Plan

Part 1 of 2

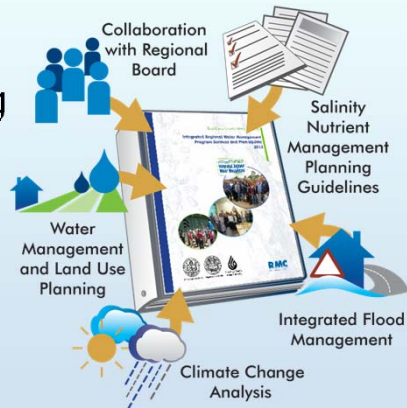


SAN DIEGO  
Integrated Regional  
Water Management

8

## 2013 San Diego IRWM Plan Update

- Update and improve 2007 IRWM Plan with existing reports, planning studies, and stakeholder input
- Meet new DWR IRWM Plan requirements
- Amend existing plan to characterize resources on a **watershed-scale**



## Prop 84-Round 2 Grant Opportunity

- To date, San Diego has received \$9 million in Proposition 84 grant funding through the IRWM Program
- **\$56 million** remaining for our region in implementation grant funding
- DWR recently announced Round 2 of implementation grant funding
- Approximately **\$10.3 million** is available for the San Diego region in Round 2

## Project Submittal Process



## Project Integration

- Integration: The “I” in IRWM
  - Increases level of benefits for the Region
  - Improves likelihood project will receive IRWM grant funding

*Zoological Society of San Diego's Biofiltration Wetland Creation and Education Program integrated water quality improvements with habitat creation and education to the public*



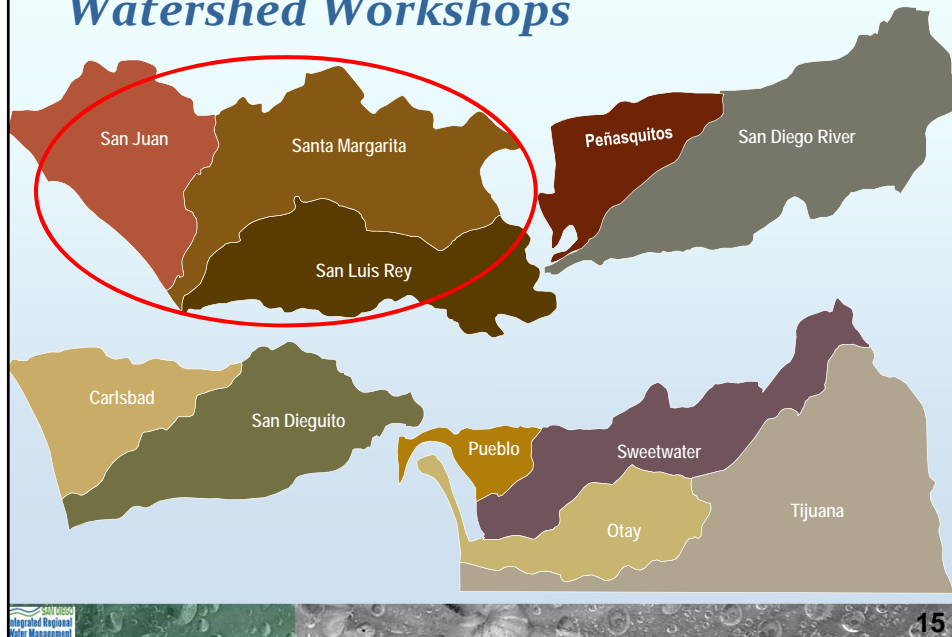
## *Different Types of Integration*

- **Partnerships** – Partnerships between different organizations
- **Resource Management** – Employing multiple water management strategies within a single project
- **Beneficial Uses** – Project supports several different beneficial uses
- **Geography** – Implementing watershed- scale or regional- scale projects
- **Hydrology** – Addressing multiple watershed functions within the hydrologic cycle

## *Agenda*

- Welcome & Introductions
- IRWM Overview
- San Juan Watershed
- Santa Margarita Watershed
- San Luis Rey Watershed
- Next Steps

## Watershed Workshops



## San Juan Watershed

- **References:**

- 2011 Camp Pendleton Water Resource Plan
- DWR Groundwater Bulletin 118
- 2010 Urban Water Management Plans (UWMPs)
- Watershed Urban Runoff Management Plans (WURMPs)
- Multiple Species Conservation Plans (MSCPs)
- RWQCB Basin Plan & 303(d) List





## San Juan Watershed

- **Watershed Characterization:**

- Only partially located within region: ~30%
- Water systems largely within federal (military) jurisdiction, also served by the Water Authority
- Groundwater and imported water sources
- Water quality concerns – Nitrates, TDS, iron, sodium, and bacteria
- Largely undeveloped, extensive natural habitats



## San Juan Watershed

- **Water Management Issues:**

- Coordination of management actions across Orange/Riverside/San Diego County boundaries
- Significant military presence – federal jurisdictional issues
- Protection of extensive natural habitats (wildlife corridors)



## *San Juan Watershed*

- **IRWM Priorities for Watershed:**

- What are the watershed priorities for the IRWM Plan Update?
- What multi-benefit projects or programs are well-suited for IRWM funding?



## *Agenda*

- Welcome & Introductions
- IRWM Overview
- San Juan Watershed
- **Santa Margarita Watershed**
- San Luis Rey Watershed
- Next Steps

## Santa Margarita Watershed

- **References:**

- 2005 Santa Margarita River Watershed Management Plan
- DWR Groundwater Bulletin 118
- 2010 Urban Water Management Plans (UWMPs)
- Watershed Urban Runoff Management Plans (WURMPs)
- Multiple Species Conservation Plans (MSCPs)
- RWQCB Basin Plan & 303(d) List



21

## Santa Margarita Watershed

- **Watershed Characterization:**

- Only partially located within region: ~27%
- Western portion receives imported water; Eastern portion relies largely on groundwater and surface water diversions
- Watermaster since 1975 to administer and enforce legal provisions for water rights and water systems
- Water quality issues may be due to development



22

## Santa Margarita Watershed

- **Water Management Issues:**

- History of water rights and water use litigation
- Population growth and development – water quality issues and loss of natural resources
- Water quality – Rainbow Creek Nutrient TMDLs
- Desire to expand use of recycled water and associated impacts on water quality



23

## Santa Margarita Watershed

- **IRWM Priorities for Watershed:**

- What are the watershed priorities for the IRWM Plan Update?
- What multi-benefit projects or programs are well-suited for IRWM funding?



24

## Agenda

- Welcome & Introductions
- IRWM Overview
- San Juan Watershed
- Santa Margarita Watershed
- San Luis Rey Watershed
- Next Steps

## San Luis Rey Watershed

- **References:**
  - San Luis Rey Watershed Council Priority Issues
  - DWR Groundwater Bulletin 118
  - 2010 Urban Water Management Plans (UWMPs)
  - Watershed Urban Runoff Management Plans (WURMPs)
  - Multiple Species Conservation Plans (MSCPs)
  - RWQCB Basin Plan & 303(d) List



## San Luis Rey Watershed

- **Watershed Characterization:**
  - 55% undeveloped, mostly east of I-15
  - Imported and local water sources
  - Brackish groundwater wells in Coastal area (Oceanside)
  - San Luis Rey River largely unchannelized, except in urban areas to control flooding



## San Luis Rey Watershed

- **Water Management Issues:**
  - Water quality – Bacteria TMDL, agricultural uses, Gregory Canyon Landfill and other industrial uses
  - Channelization/urbanization – water quality issues and loss of natural resources
  - Surface water/shallow aquifer issues
  - Floodplain management



## *San Luis Rey Watershed*

- **IRWM Priorities for Watershed:**
  - What are the watershed priorities for the IRWM Plan Update?
  - What multi-benefit projects or programs are well-suited for IRWM funding?

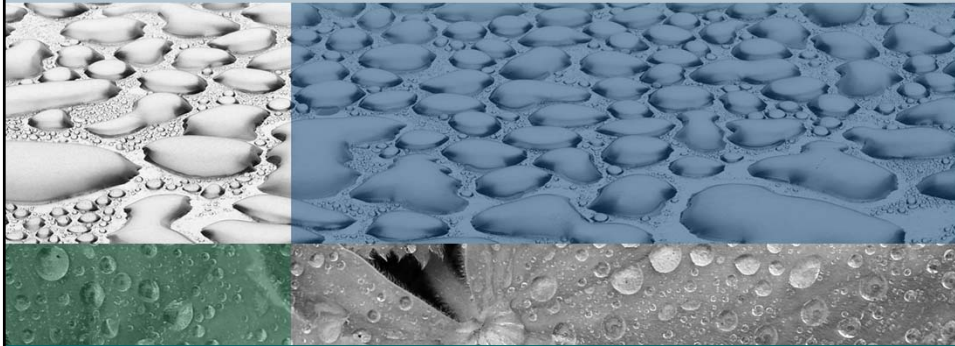


## *Agenda*

- Welcome & Introductions
- IRWM Overview
- San Juan Watershed
- Santa Margarita Watershed
- San Luis Rey Watershed
- Next Steps



*Watershed Workshop  
San Juan – Santa Margarita – San Luis Rey*



September 25, 2012