




# Water Supply Conditions Update

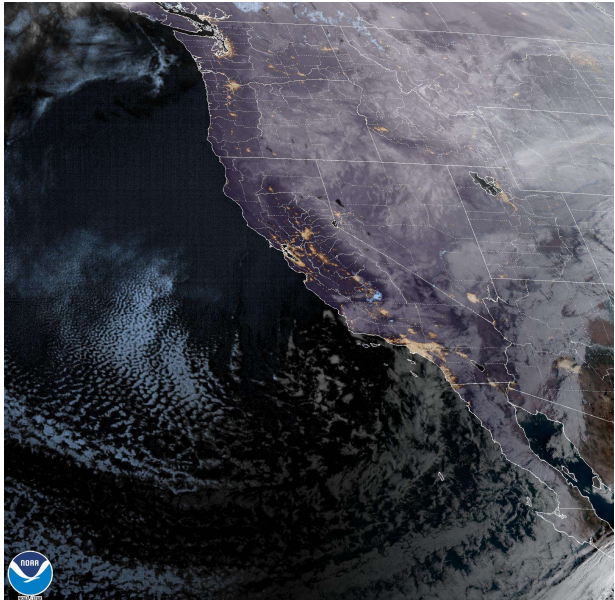
February 1, 2023  
IRWM RAC Meeting

Mina Ziaei  
Senior Management Analyst

1


## Atmospheric Rivers

- Concentrated streams of water vapor
- Can be 1000+ miles long and 275+ miles wide
- ARs can account for most of the precipitation in California



NOAA

30 Jan 2023 15:30Z - NOAA/NESDIS/STAR GOES-West - GEOCOLOR Composite - Western US Seaboard

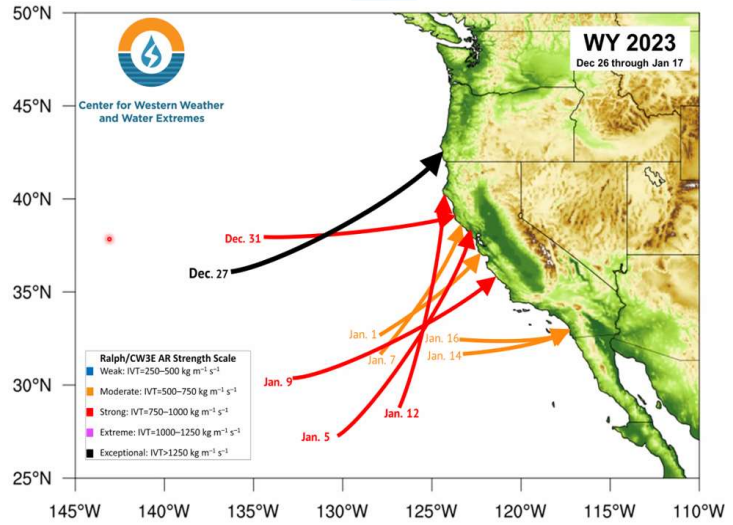


2

2

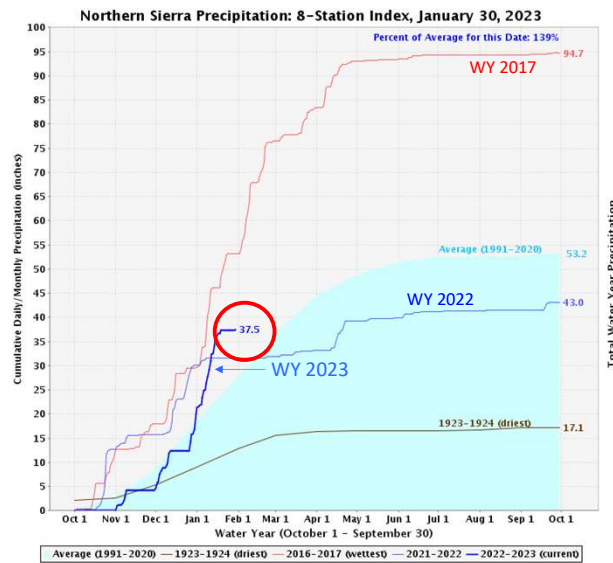
## Recent Atmospheric Rivers

- Nine between December 26 and January 17
  - Five were of strong or greater magnitude
- California averaged 6.5 strong or greater magnitude ARs per water year since 2012
- California experienced 13 strong or greater magnitude ARs in Water Year 2017

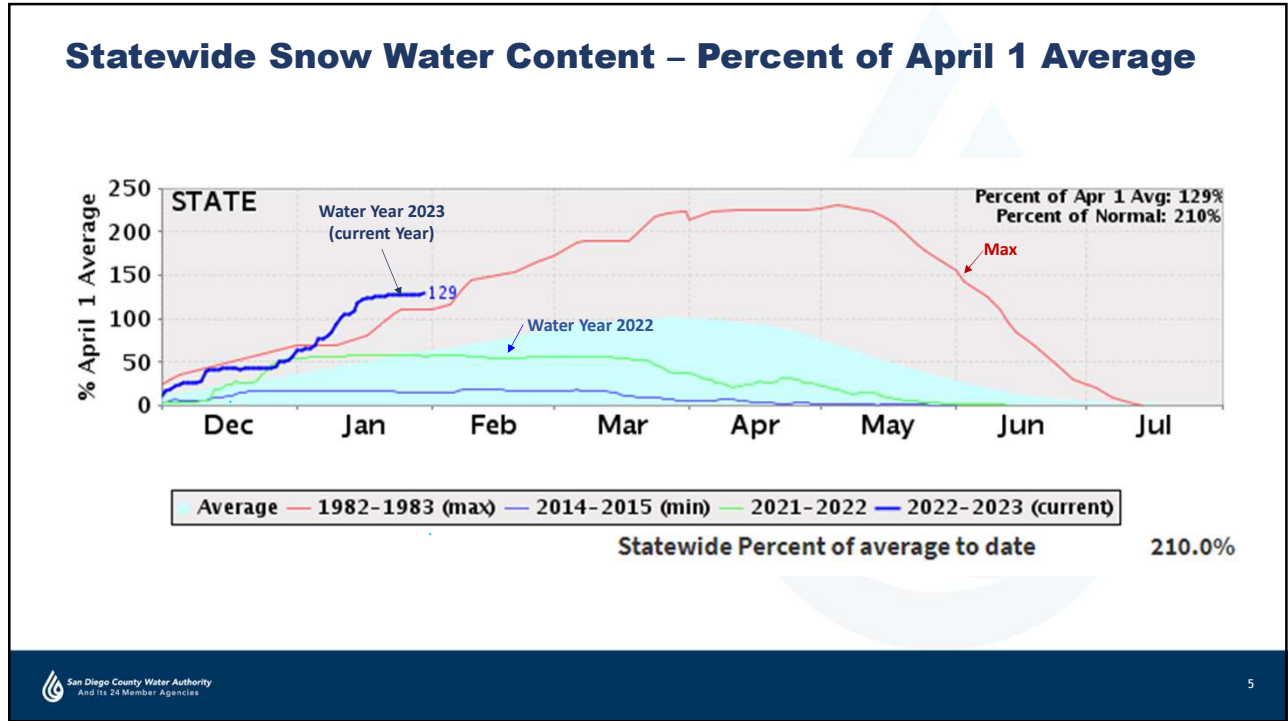


3

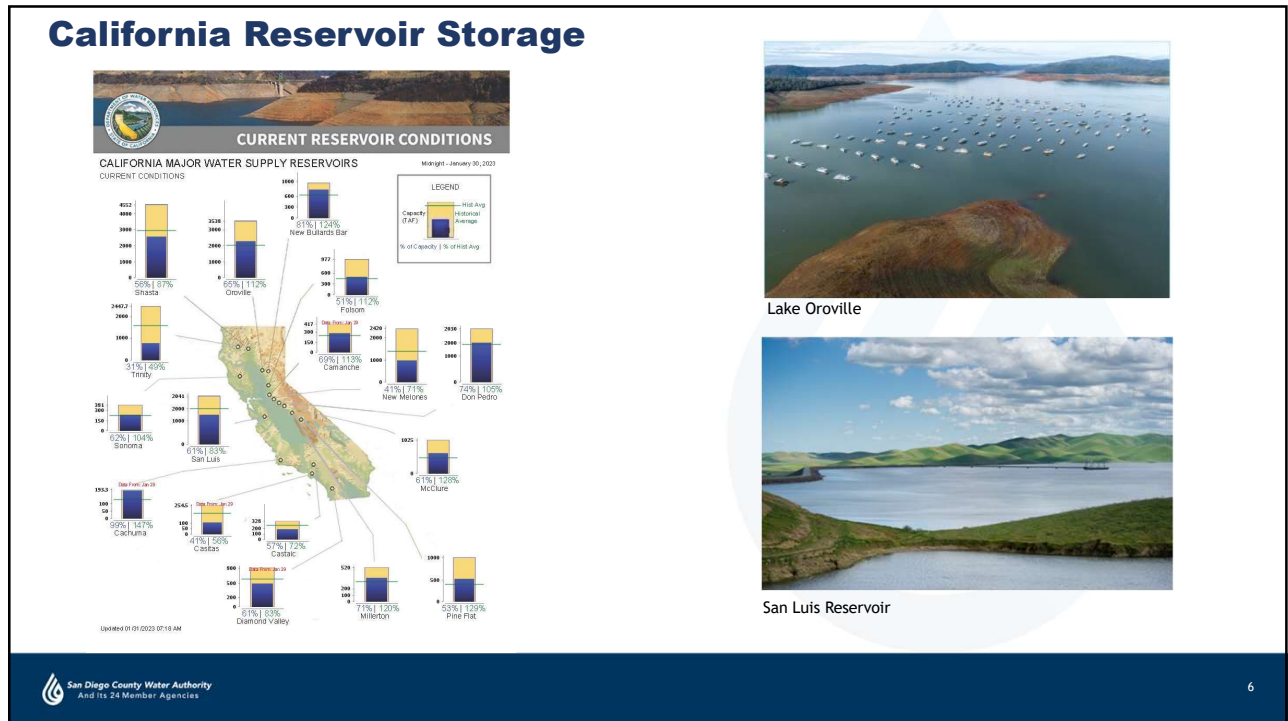
## Northern Sierra Precipitation 8-Station Index (Through Jan. 30, 2023)



4



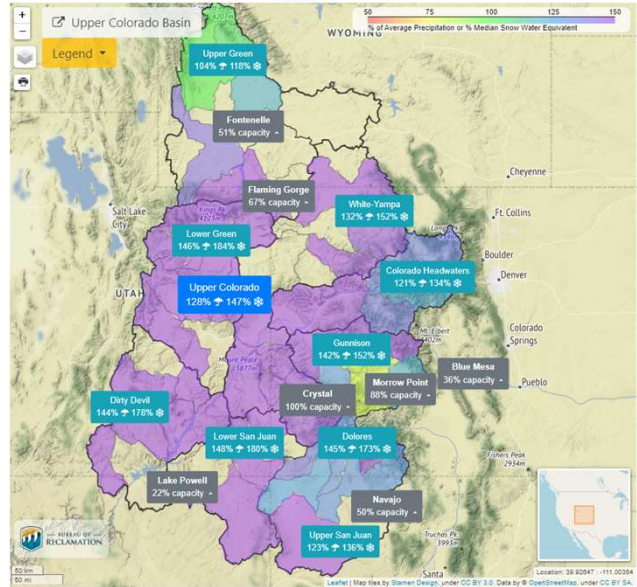
5



6

## Colorado River Basin Conditions

- **Upper Colorado Basin-January 30, 2023:**
  - Precipitation 128% of normal
  - Snow water equivalent 147% of normal
  - Lake Powell 22% full (5.5 MAF)
- **Lower Colorado Basin-January 23, 2023:**
  - Lake Mead 28% full (7.3 MAF)

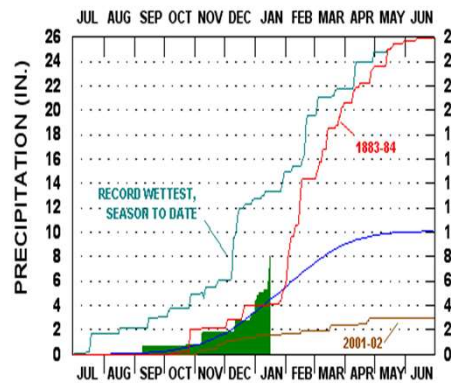


7

## Local Precipitation – Water Year 2023 \*

Station	Actual	% Normal
Lindbergh Field	7.54 in.	156%
Ramona Airport	12.61 in.	187%

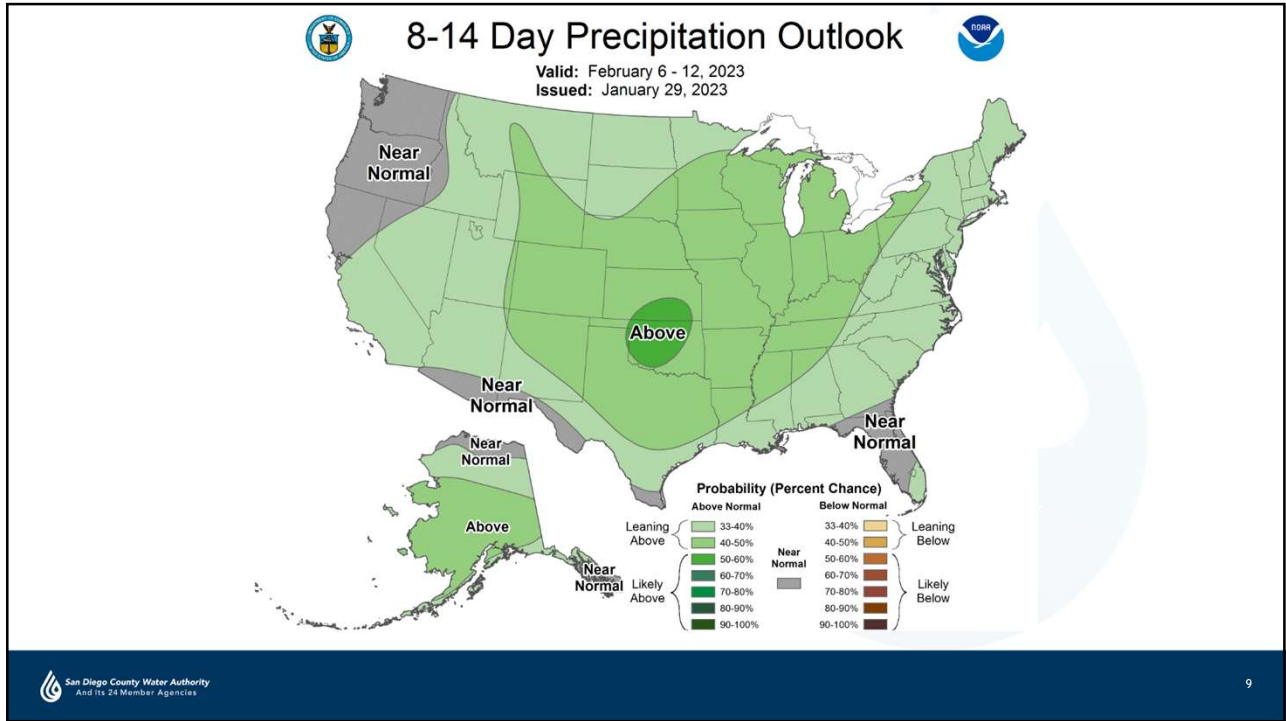
\* October 1, 2022 – January 30, 2023



Lindbergh Field- January 16

8





9

## California Storms– January 2023

California various [floodings](#) through January 10, 2023:

- Roadway flooding and mudslides in Fresno
- Flooding and uprooted trees within city of Sacramento
- Evacuations and road closures in Santa Barbara
- City of Gilroy in Santa Clara County was underwater on January 9<sup>th</sup>

Chatsworth

Capitola

Studio City

Los Angeles River

San Diego County Water Authority  
 And Its 24 Member Agencies

10

# Current Condition- January 2023

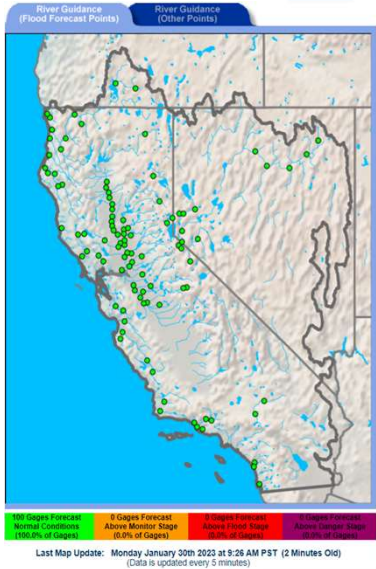
## FLOOD SAFETY TIPS

### PREPARING BEFORE

- ▶ **KNOW YOUR AREA'S FLOOD RISK**  
Determine your flood risk by visiting [www.msc.fema.gov](http://www.msc.fema.gov) or scan the QR code
- ▶ **IF YOU LIVE IN A FLOOD-PRONE AREA, PURCHASE FLOOD INSURANCE**  
Flood insurance is NOT included in your homeowner's policy
- ▶ **TAKE PHOTOS OF IMPORTANT POSSESSIONS**
- ▶ **CLEAN YOUR DRAINS & GUTTERS REGULARLY**
- ▶ **TURN ON YOUR CELL PHONE'S WIRELESS EMERGENCY ALERT NOTIFICATIONS**

### STAYING SAFE DURING

- ✓ **HEED EVACUATION ORDERS FROM LOCAL OFFICIALS**
- ✓ **STAY UP TO DATE WITH THE LATEST WEATHER FORECAST**
- ✗ **DON'T TOUCH ELECTRICAL EQUIPMENT IF IT IS WET**
- ✗ **NEVER DRIVE THROUGH FLOODED WATERS AND AROUND BARRICADES!**



11

# Thank You!

- @sdcwa
- SanDiegoCountyWaterAuthority
- @sdcwa

12