



Water Supply Conditions

Efren Lopez
Water Resources Specialist

1

DWR Snow Survey - April 1, 2022



- Phillips Station
 - 1 inch of snow water equivalent
 - 4% of average



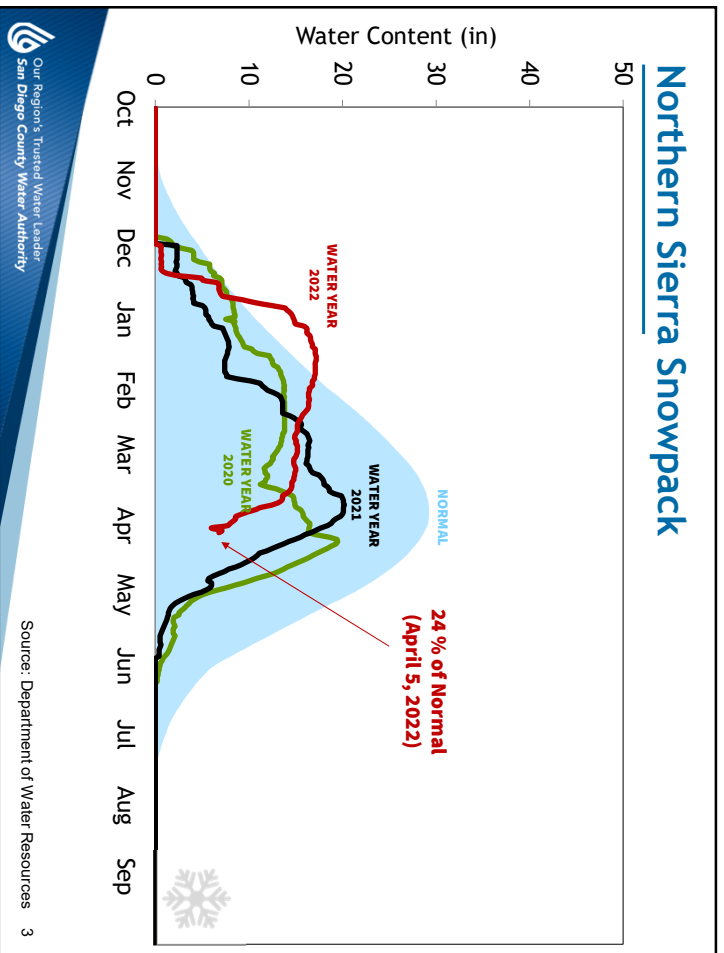
- Statewide
 - 8.7 inches of snow water equivalent
 - 31% of average



2

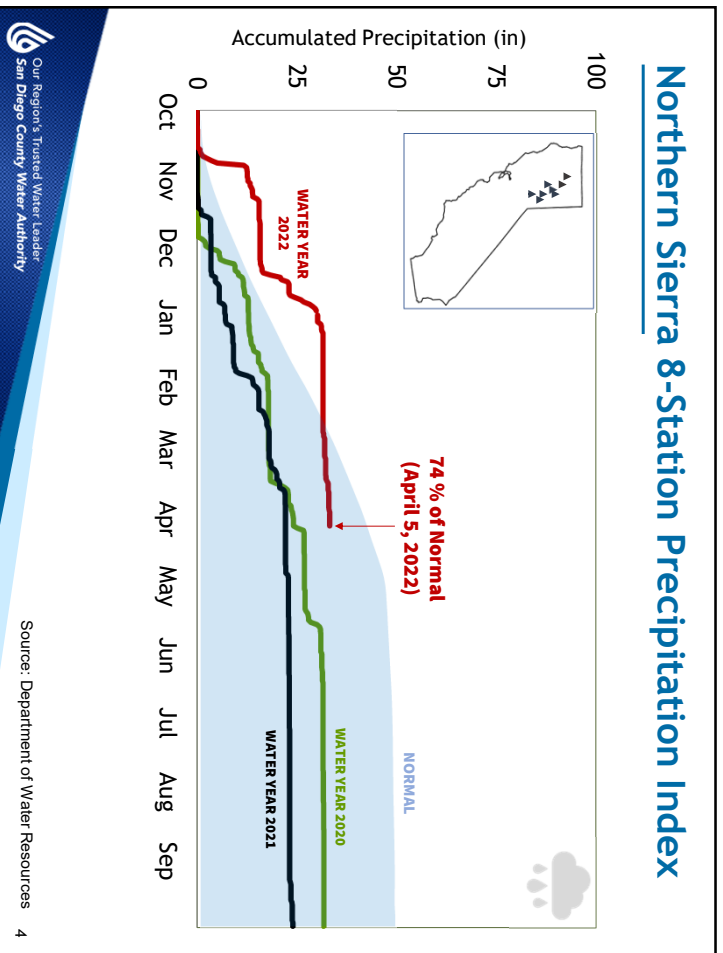
2

Northern Sierra Snowpack

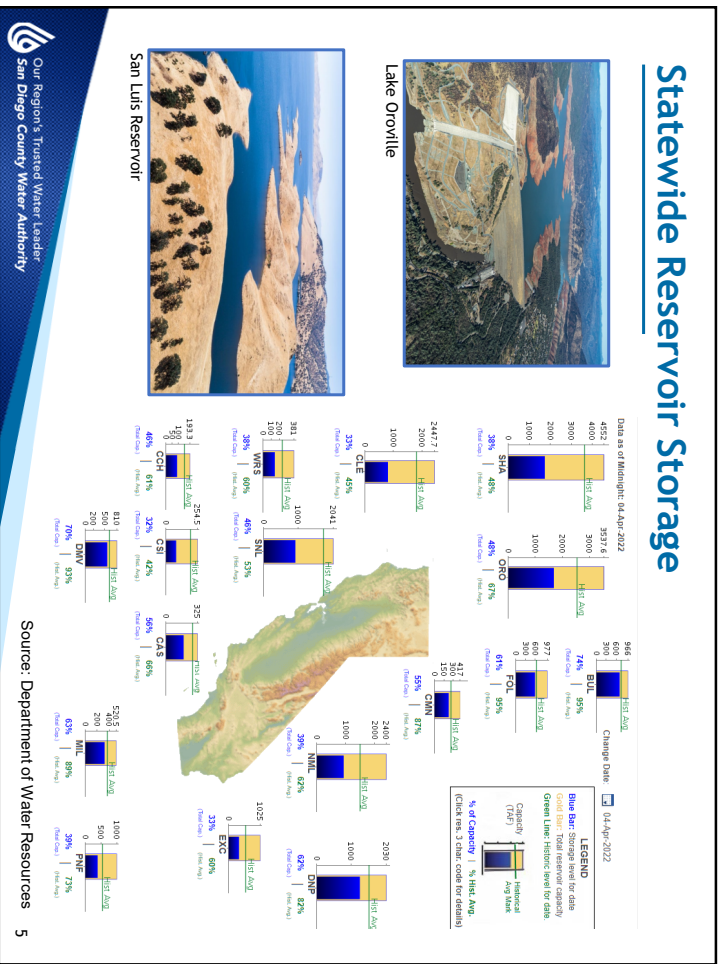


3

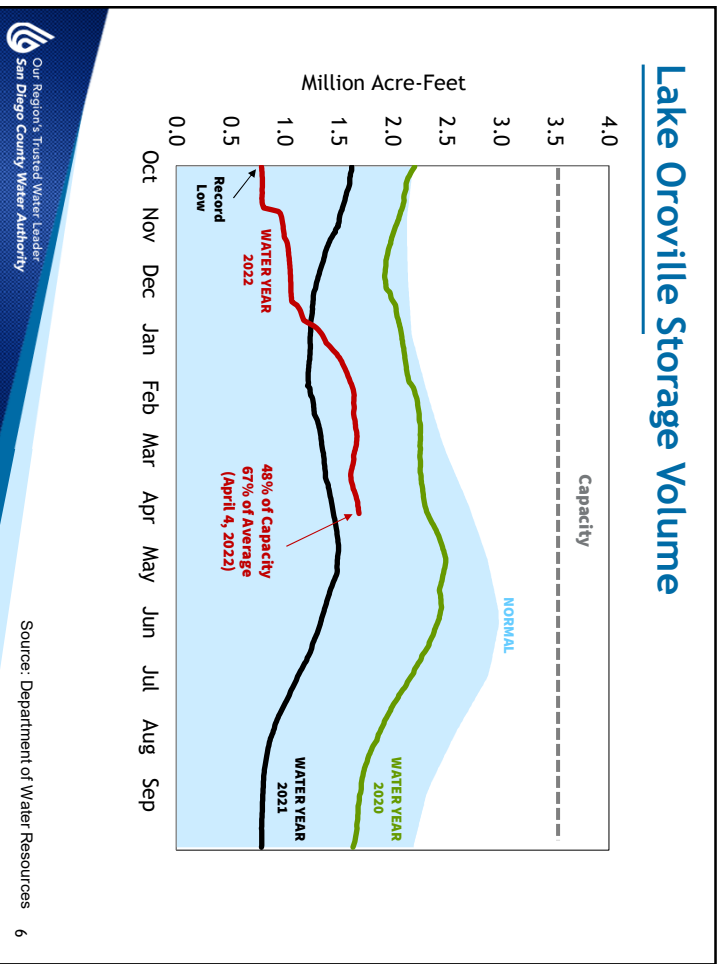
Northern Sierra 8-Station Precipitation Index



4



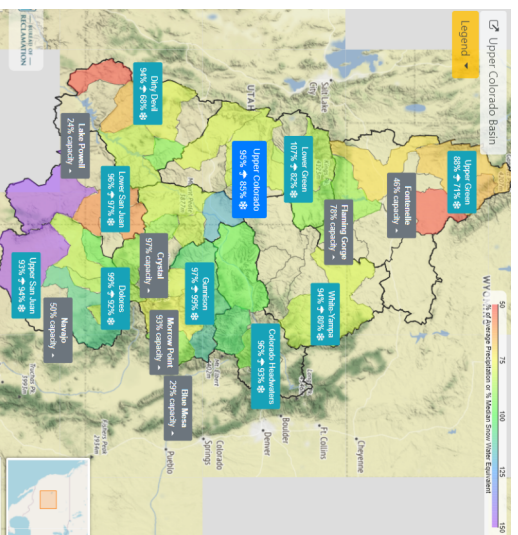
5



6

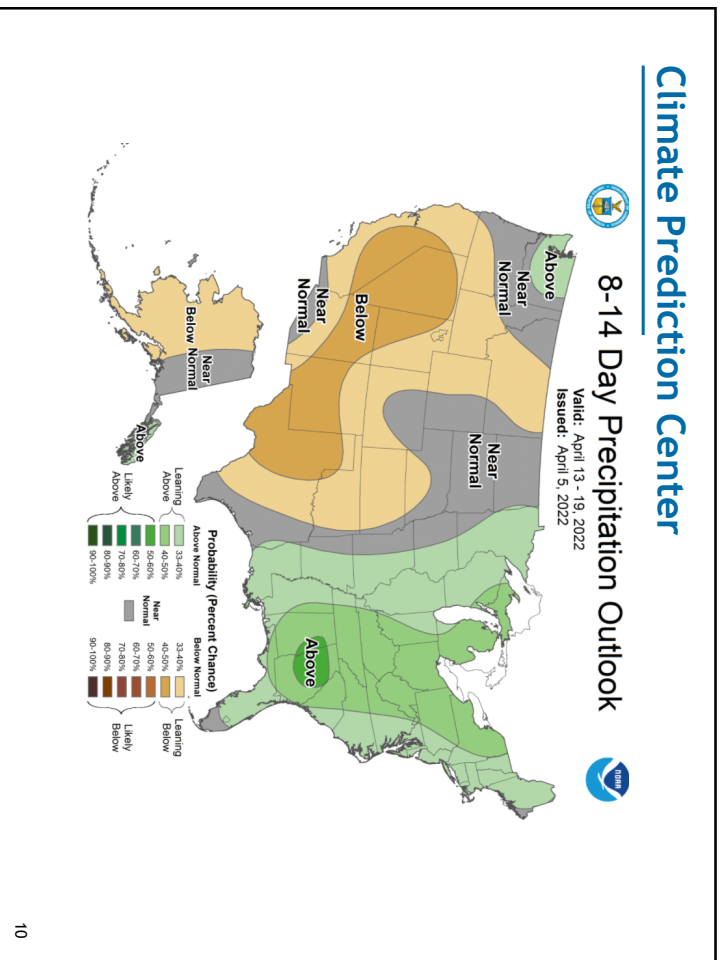
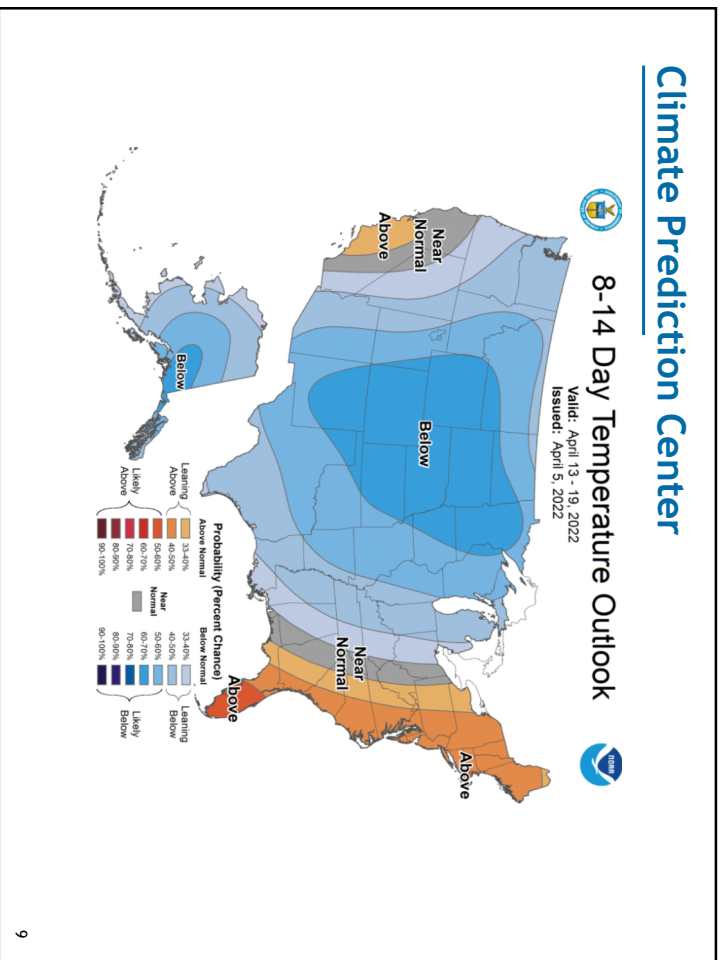
Colorado River Basin Conditions

- As of March 21, 2022:
- Precipitation 95% of normal
- Snow water equivalent 85% of normal
- Lake Mead 33% full (8.5 MAF)
- Lake Powell 24% full (5.8 MAF)



Local Conditions

Water Year (WY) 2022 Precipitation				
	Month To-Date April 1-5, 2022		Water Year To-Date October 1, 2021 - April 5, 2022	
Station	Actual	% Normal	Actual	% Normal
Lindbergh Field	0.01 in.	7%	6.07 in.	69%
Ramona Airport	0 in.	0%	9.31 in.	71%



- Governor Newsom's Recent Executive Order**
- Signed March 28, 2022
 - Directs State Water Board to consider adopting emergency regulations that include requirements to:
 - Submit preliminary Annual Water Supply and Demand Assessment by June 1 (and final version by July 1)
 - Activate Level 2 of Water Shortage Contingency Plan
 - Ban irrigation of "non-functional" turf in commercial and industrial sectors

**EXECUTIVE DEPARTMENT
STATE OF CALIFORNIA**

EXECUTIVE ORDER N-32

WHEREAS on April 12, 2021, May 10, 2021, June 8, 2021, and October 16, 2021, I signed Executive Orders N-30, N-31, N-32, and N-33, respectively, directing the State Water Board to review and recommend drought conditions for the counties of California, date to determine and rescinding drought conditions; and

AND WHEREAS California's extreme drought conditions have led to the loss of millions of gallons of water, increased water prices, and increased water conservation efforts on our nation's water resources; and

AND WHEREAS the State Water Board has been authorized to issue emergency regulations to address drought conditions, including drought conditions in the State of California; and

AND WHEREAS the State Water Board has been authorized to issue emergency regulations to address drought conditions, including drought conditions in the State of California; and

AND WHEREAS the ongoing drought will have significant, immediate impacts on the State of California, and the State Water Board has been authorized to issue emergency regulations to address drought conditions, including drought conditions in the State of California; and

AND WHEREAS the ongoing drought will have significant, immediate impacts on the State of California, and the State Water Board has been authorized to issue emergency regulations to address drought conditions, including drought conditions in the State of California; and

AND WHEREAS the ongoing drought will have significant, immediate impacts on the State of California, and the State Water Board has been authorized to issue emergency regulations to address drought conditions, including drought conditions in the State of California; and

AND WHEREAS the ongoing drought will have significant, immediate impacts on the State of California, and the State Water Board has been authorized to issue emergency regulations to address drought conditions, including drought conditions in the State of California; and

11

Questions

12