

WATER WAYS – Regional Water Equity



Review of Report Preliminary Findings
IRWM Regional Advisory Committee
October 4, 2023

Agenda



Project Overview & Status

Report Key Takeaways

Next Steps & Feedback



Today's Goal

Board Direction

- Received September 2022

Response to State Drought

- Regional Assessment with Equity focus

OSEJ & DPW

- Geosyntec & LeSar as Partners

Today's Goal

Board Direction

- Received September 2022

Response to State Drought

- Regional Assessment with Equity focus

OSEJ & DPW

- Geosyntec & LeSar as Partners





Project Overview

FOCUS AREA

Diego County, Imperial County, and Binational

PRIMARY CONTENT

- **Water conservation, collection and reuse:**
 - Stormwater from County roads & highways
 - Graywater reuse,
 - Water reuse in affordable housing
- **Water in Agriculture:**
 - Identify risks, opportunities, and incentives for water use in agriculture
- **Related extreme weather risks:**
 - Investments needed for increased resilience

The Region and Focus Areas

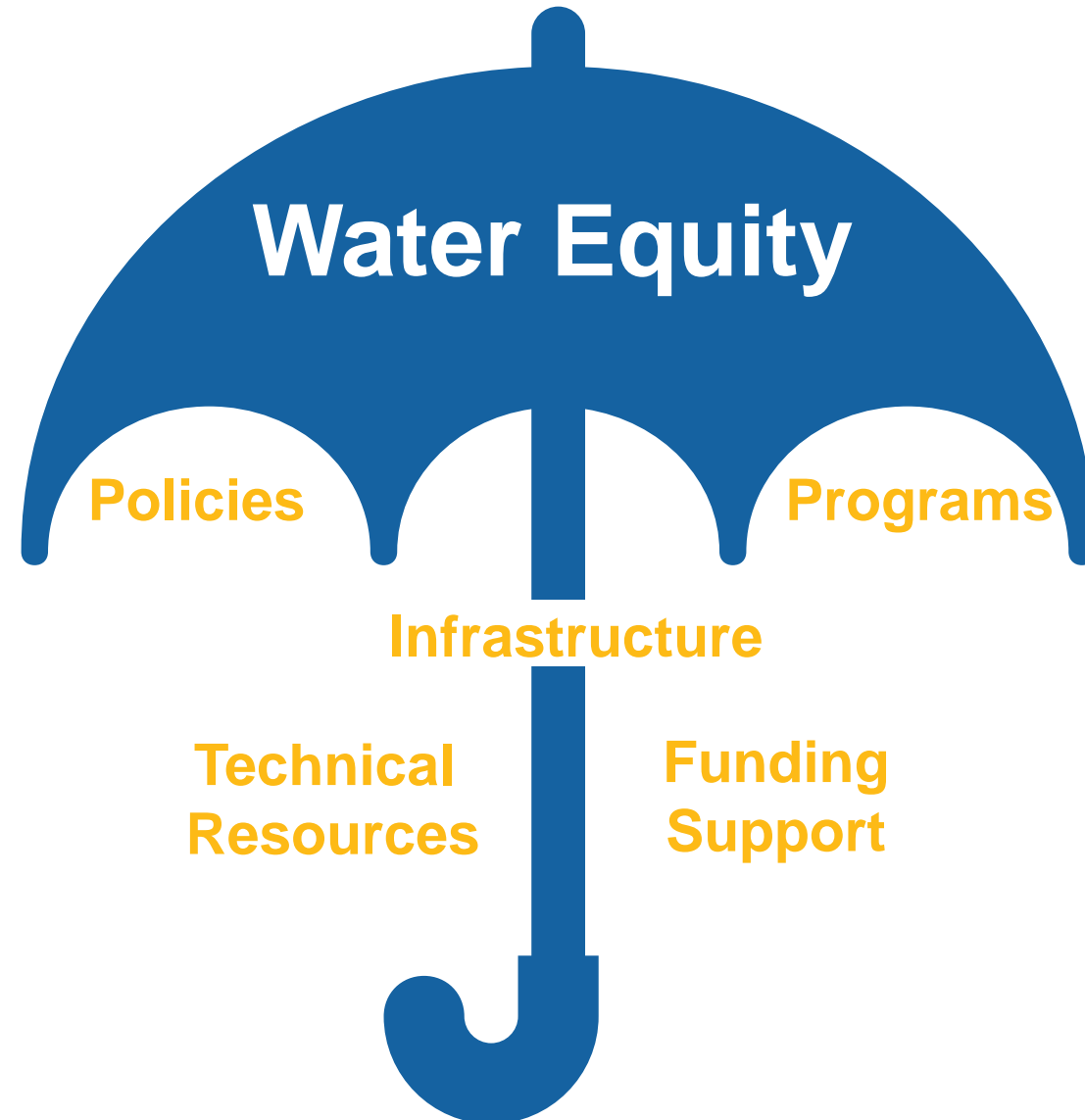




Key Take Aways By Focus Area

- **Western San Diego County** – Implement One Water Reuse Nexus Solutions, partnerships with Mexico on transboundary water management solutions such as groundwater management and desalination projects
- **Eastern San Diego County** – Groundwater studies and localized on-site reuse opportunities
- **Tribal Nations** – Water rights considerations, groundwater management efforts, regional and local water reuse opportunities
- **Imperial County** – Continuing agricultural efficiencies, potential for water rights auctioning, or expanded QSA type transfer agreements. Diversification may also be a good idea, but will increase cost of water
- **Border Communities** – Partnership projects with the US to improve local sewage issues, desalination projects, managed aquifer recharge, are needed.

Community Outreach & Stakeholder Engagement



Water Equity, as defined by Our Communities

“

To ensure water is managed equitably, representatives of underserved groups need to have a voice within executive levels of water management.

-Community Representative

”

“

A New Culture of Water

is needed in Mexico.

-Mexico Water Manager

”



“

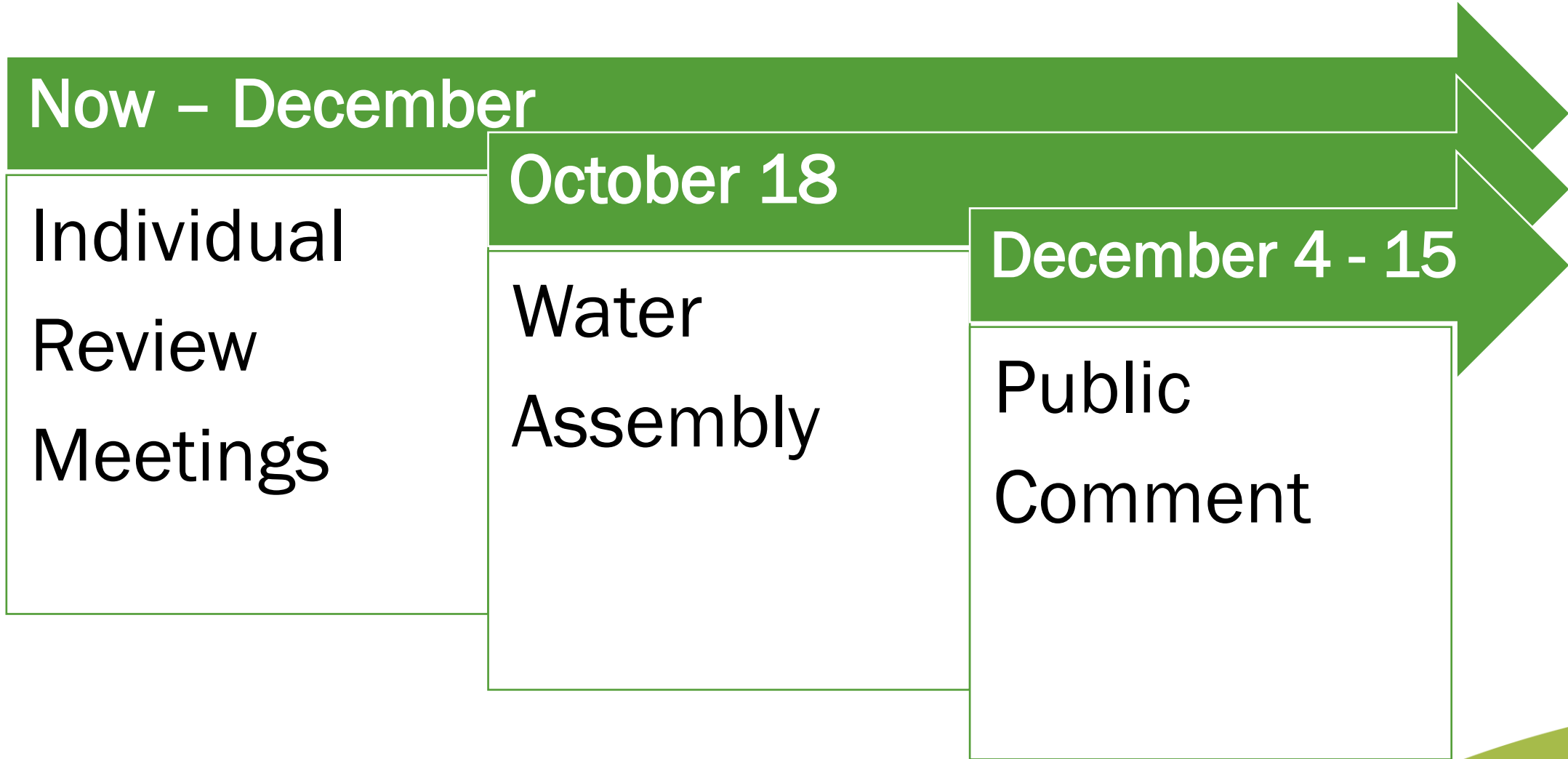
We're well versed at managing water during droughts, but we need to do a better job of collecting water during extreme rain events.

-San Diego Water Manager

”



Next Steps



Your Feedback



Any Questions or comments?

- What topics from this study are a priority or great interest for you or your community?
- Which focus areas would you like to see more information on?

Thank You!



Please Contact - Elise Ruiz:
Elise.Ruiz@sdcounty.ca.gov

Regional Water Equity Website:
www.sandiegocounty.gov/osej/waterequity

Office of Sustainability and Environmental Justice Website:
hwww.sandiegocounty.gov/osej

Back-up slides



Regional Water Equity Report: Project Overview



Water Sustainability

- Stormwater Collection
- Water Diversion
- Greywater Reuse
- Water Agriculture

Affordable Housing Water Reuse

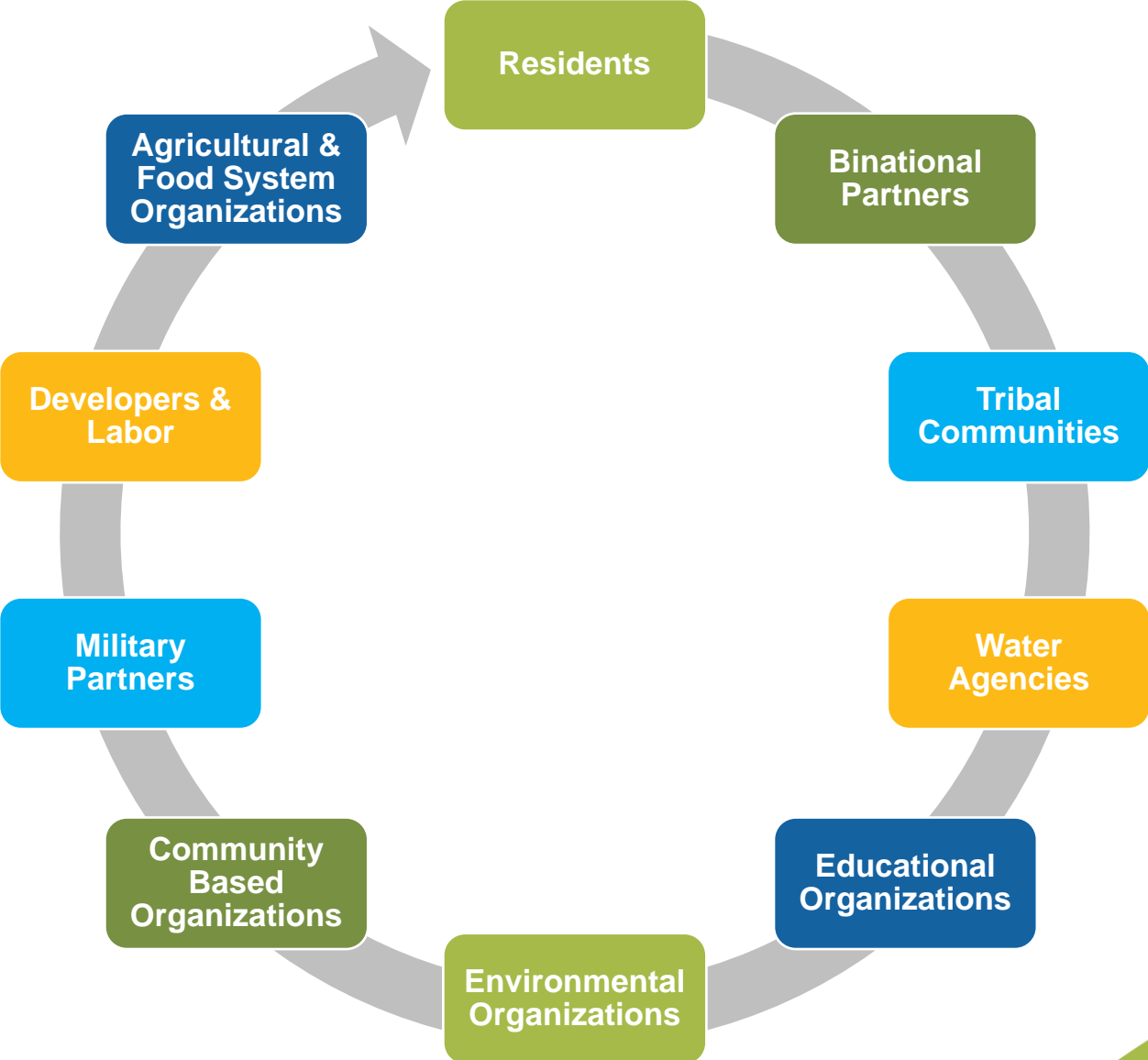
- Available incentives to integrate & install

Financial Considerations

- Risks caused by extreme weather
- Investments needed for resilience



Outreach: Diverse Stakeholders



Community Outreach & Stakeholder Engagement



VARIOUS STAKEHOLDERS INTERVIEWED



Water Equity Metrics

The number of sources of water, as well as the dependability and consistency of each source.

Reliability

Affordability

Water Equity

The portion of household median income allocated to paying for water.*

The safety of water for human consumption, cooking, and sanitary purposes.

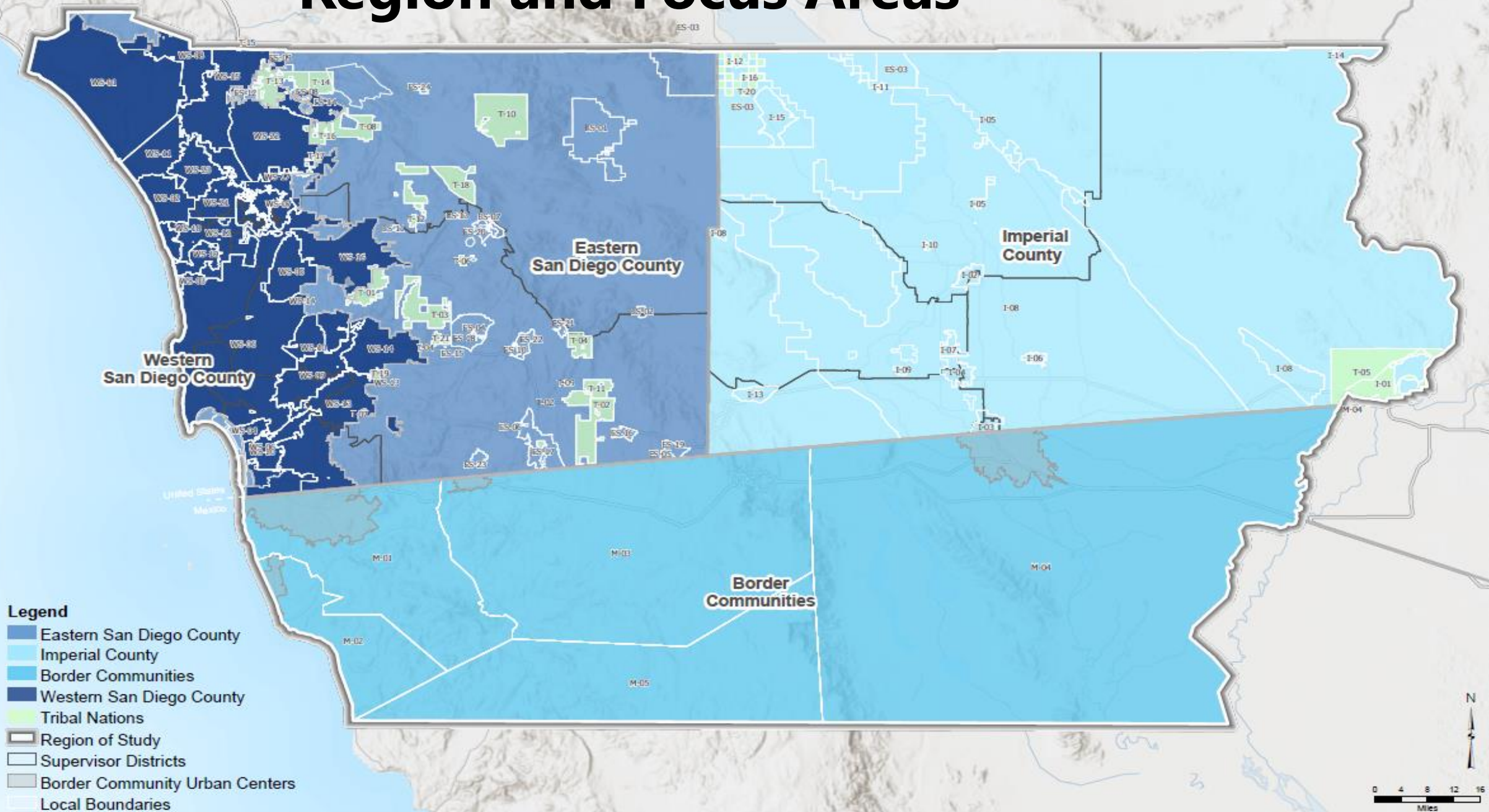
Quality

Accessibility

The presence and condition of conveyance infrastructure.

*This study evaluates the costs of municipal supplies only, excluding private water wells, hauled water, or bottled water.

Region and Focus Areas



Stakeholder Interviews: Qualitative Takeaways

Water Sustainability

Affordable Housing
Water Reuse

Financial
Considerations

Develop a comprehensive approach for equitable water management

Focus on underserved communities & include in water management decisions

Diversify water supply to improve infrastructure

Outreach: Overall Process Feedback

Stakeholder Insights

- Report is the first step in right direction
- Need for increased education

Stakeholder Priorities

- Each stakeholder group has unique needs
- All are looking for recommendations to improve sustainable water management

Stakeholder Concerns

- Limited water supply and storage
- Anticipated increased water rates due to supply constraints



Outreach: Planned Engagement

Continued Outreach

- Engagement events
 - Ongoing through September
- Technical Working Groups Review Sessions
 - September - October

