



A Pileup of Inequities*

Dismantling racism and the intersection of environmental, economic and social justice in San Diego



Background

What we'll cover:

- Understanding Equity – Past & Present
- What you can do at work
- What you can do at home



Setting the Stage

Environmental Justice IS Racial Justice

3



TOPICS PROJECTS FEATURES ABOUT GET INVOLVED SEARCH

'A Pileup of Inequities': Why People of Color Are Hit Hardest by Homelessness

STATELINE ARTICLE March 29, 2019 By: Teresa Wiltz Topics: Safety Net & Business of Government Read time: 6 min

Share Read Mode



RELATED

Topics Safety Net, Business of Government
Places United States, California, Minnesota, Washington

EXPLORE MORE FROM STATELINE

explore by place

explore by topic

STATELINE DAILY

4

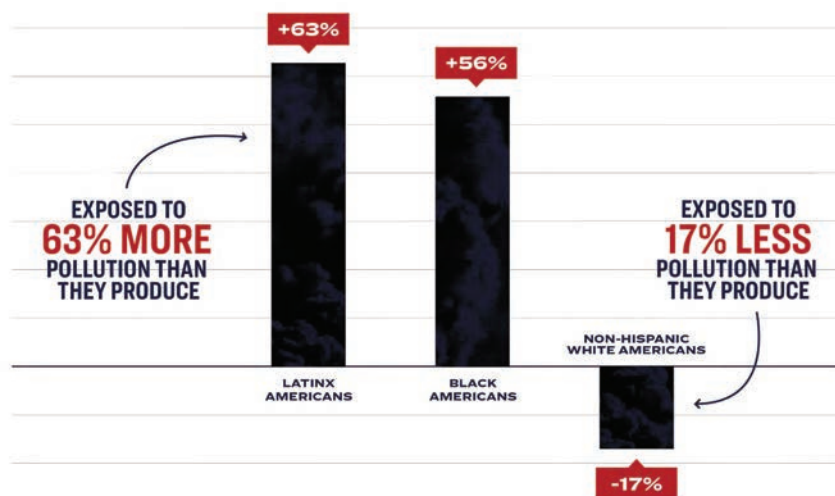
The Data

- Neighborhoods within 2.5 Miles of a facility that emitted localized GreenHouse Gases (GhG):
 - **22%** higher minority population
 - **21%** higher poverty rates
- 92113 Asthma Hospitalization Rate higher than **92.9%** of California
 - 78% Hispanic
 - 12% Black
 - 66% of renters spend 30%+ monthly income on rent

5

The Data

POLLUTION EXPOSURE BY POPULATION (2003-2015)



Source: Christopher W. Tessum et al., "Inequity in consumption of goods and services adds to racial-ethnic disparities in air pollution exposure," Proceedings of the National Academy of Sciences (March 2019).

6

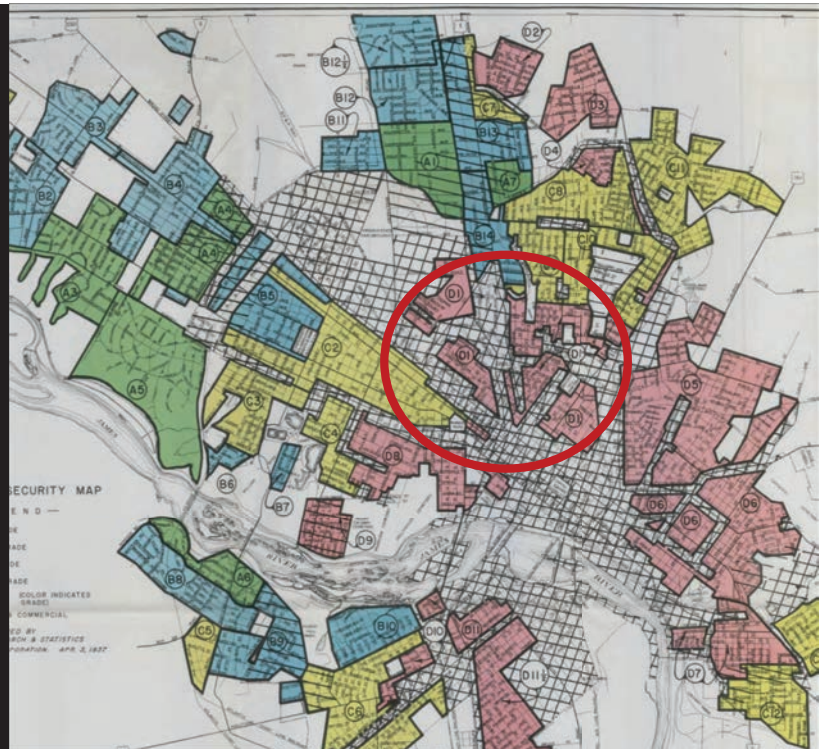
Understanding Historical Connections

Level Set:

- Yesterday's choices impact today's challenges

7

Richmond
Example:
Redlining
Map



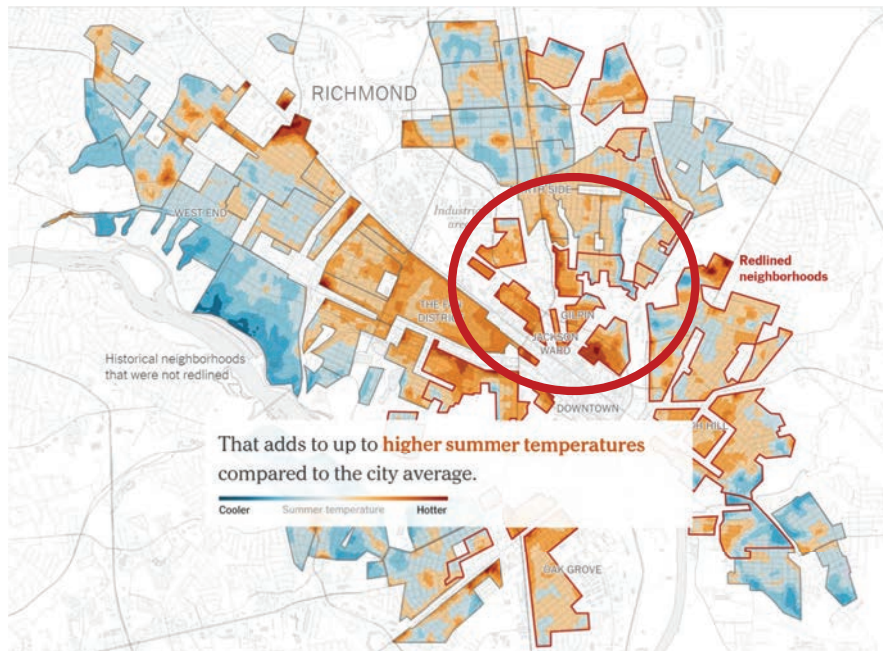
Richmond Example: Tree Cover by Area



Richmond Example: Asphalt & Paving



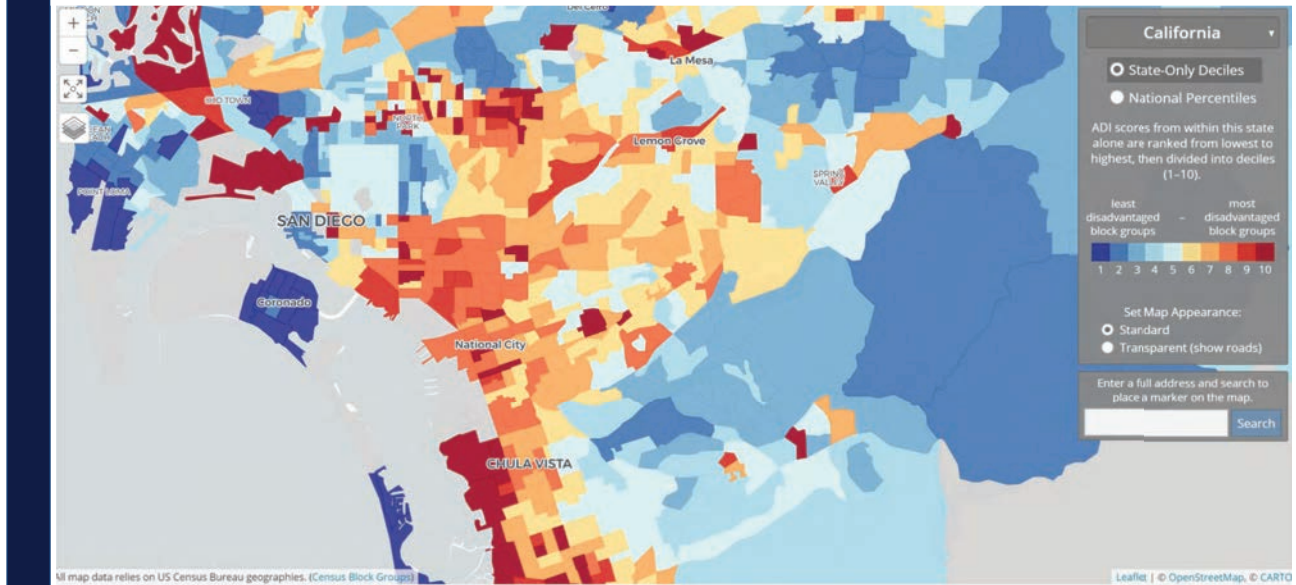
Richmond Example: Poverty and Heat



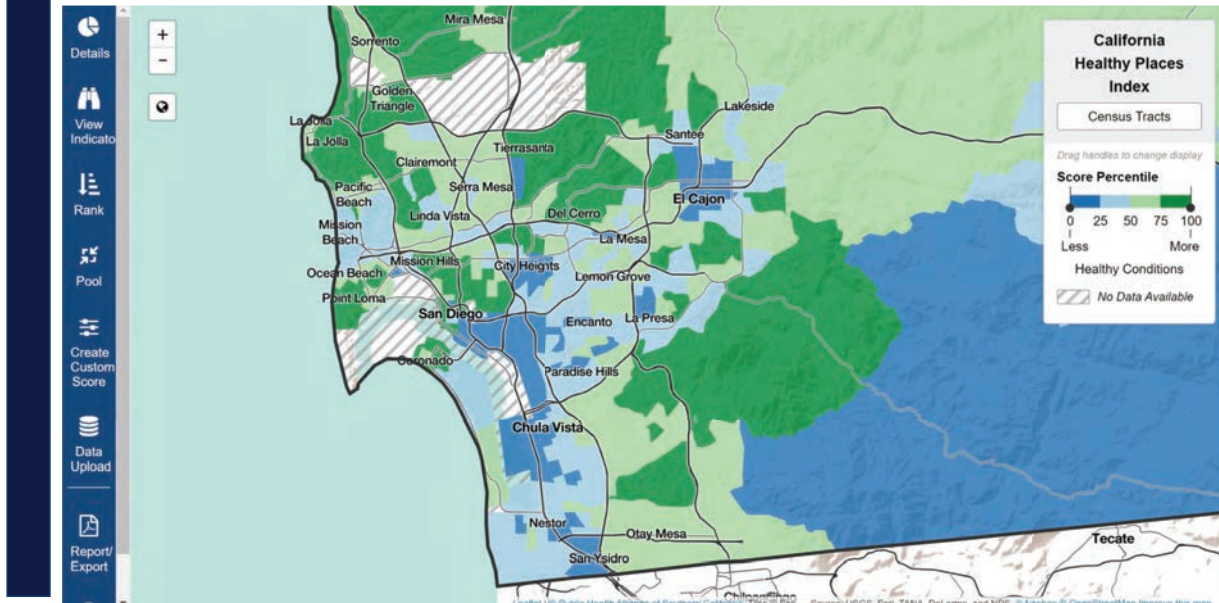
Redlining: Not just Richmond...



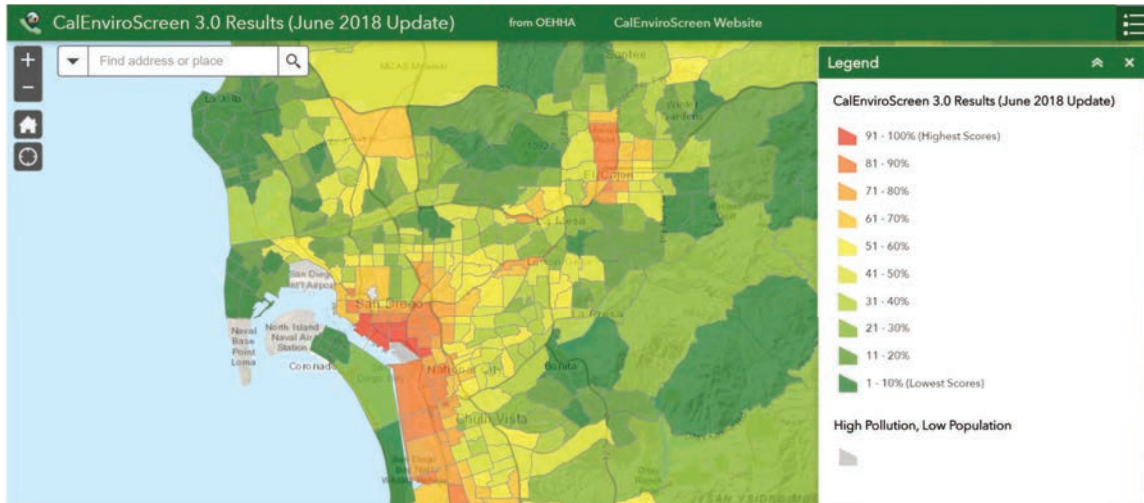
San Diego: Area Deprivation Index



San Diego: Healthy Places Index

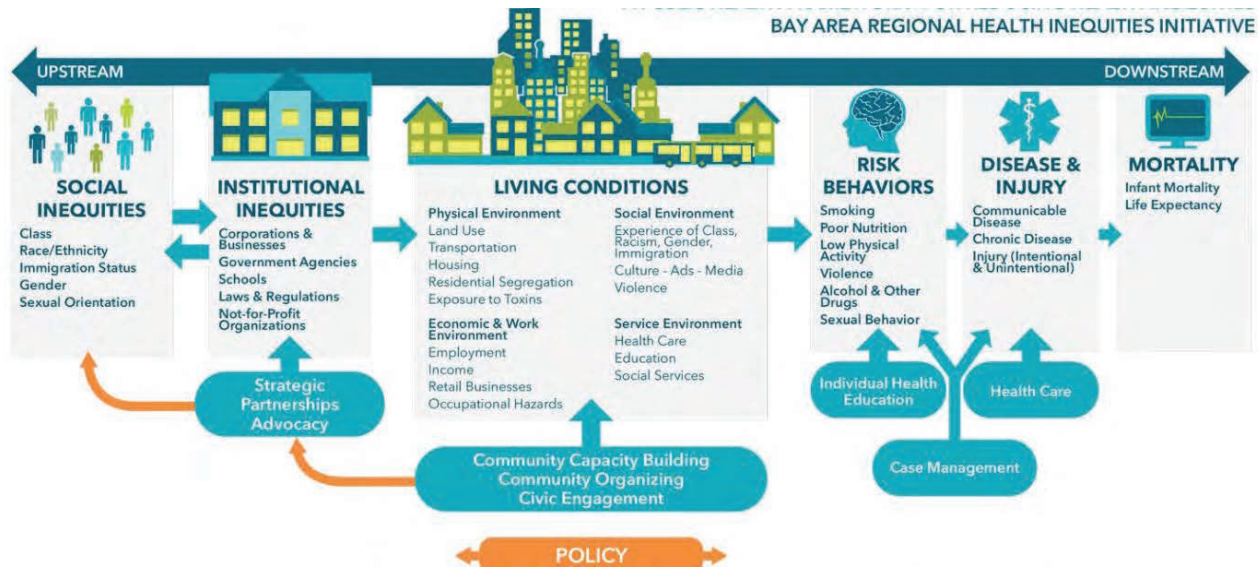


San Diego: Cal EnviroScreen (Pollution Burden)



Helpful Background, now what?

Understanding Social Determinants of Health



Understanding “Cumulative Risk”

- Cumulative risk assessment is an analysis, characterization, and possible quantification of the combined risks to human health or the environment from multiple agents or stressors.



Environmental Justice:

What YOU Can Do (at work)



What YOU Can Do

- Community Engagement:
 - Early
 - Ongoing
 - Authentic



What YOU Can Do

- Practical Internal Policies:
 - Infrastructure Investment/Maintenance
 - Cost of Failure
 - Consequence of Failure



BREAKOUT QUESTION

- In your group, please share one opportunity and one challenge to embedding racial equity in your work
 - 10 minutes in the Breakout
 - Please share helpful ideas in the chat!

Environmental Justice:

What YOU Can Do (at home)

SHARE!





LISTEN!
(without judgment)



ACT!



Final Thoughts:

Imagination & Determination

“We are now faced with the fact that tomorrow is today. We are confronted with the fierce urgency of now. In this unfolding conundrum of life and history there is such a thing as being too late. Procrastination is still the thief of time... We must move past indecision to action.”

~MLK, Jr.



Integrative Services/HHSA County of San Diego



Omar Passons, Director
(619) 507-9676

omar.passons@sdcounty.ca.gov